

**Important Dates:****Individual Photos Weds 21<sup>st</sup> September****Harvest Thurs 29<sup>th</sup> September****Last day of Term Fri 21<sup>st</sup> October****Newsletter 1, Term 1, September 2016**

Dear Parents and Carers,

Welcome back to the new school year. The children have all settled well into their classes - including our newest members of the school in Catkins!

As you know Ms Noble is still not well enough to return to school so Mrs West and Miss Swaine are in post until her return. We are delighted that our new members of staff Miss Line, Mrs Coburn and Mr Gratwick have made a really positive start to their time here at Firle and are quickly becoming established members of the Firle team.

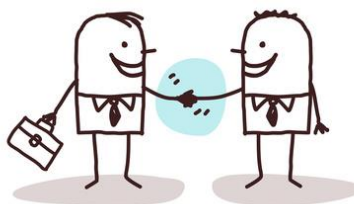
We will now run Fortnightly Newsletters to keep you updated with school news and events. This is due to increasing demands on the office staff with other administrative duties.

**Christian Value**

The Christian Value we will be focusing on in Term 1 is that of 'Endurance'. A weekly assembly and activities in classes will explore this value, it's meaning in a range of contexts, why it is such an important quality and how to develop it in ourselves.

**Meet and Greet**

Thank you to everyone who came to meet Mrs West and Miss Swaine on Monday afternoon. We appreciated your time and the thoughts and ideas you shared with us regarding the school. If anyone unable to attend has any ideas etc. which could be considered, then please speak to Mrs West or Miss Swaine, or write a note and drop it into the office. Thank you!



**Morning and Afternoon Drop off and pick up arrangements:** We are introducing a new system to start the school day so that the children can get the most of their learning time in school. From Tuesday 20<sup>th</sup> September (Monday 19<sup>th</sup> September is INSET) the gate will be open from 8:45 a.m. as usual, but the children will go straight to their classes. The teachers will be in class and one of our support staff will be at the entrance of each building to take any messages to pass on, Mrs Ricca will be at her door to welcome Catkins. The children can then settle into a morning activity and be ready to start register that

Firle Church of England Primary School, Firle, Lewes, East Sussex BN8 6LF Tel/Fax (01273) 858260

[office@firle-school.e-sussex.sch.uk](mailto:office@firle-school.e-sussex.sch.uk)

[www.firleschool.co.uk](http://www.firleschool.co.uk)

Head Teacher: Annie Noble

will run from 8:55- 9:05. Registers will close at 9:05 and any child arriving after this time will be marked as late. The gate will be manned until 9:05.

After school we have a number of clubs running, so can we ask that those not staying for a club have left the premises by 3:25 p.m. This will avoid confusion of who is being picked up and who is staying for a club. Can we remind you that your child is your responsibility once you have collected them and should only be on the apparatus if you are watching them? The gate will be shut at 3:25p.m.

If your child attends a club they will be brought by the club organiser to the gate at the finish time and signed out.

I appreciate this is a different system than usual, but it will make a huge impact to settling the children at the start of the day and ensuring that we know who is on site at the end of the day.

**Running Club:** Mrs Ricca is looking for a parent volunteer to help with running club on a Friday lunchtime from 12.15 until 12.45. Please let Mrs Ricca or the school office know if you are able to help.

**Uniform Reminder:** It has been lovely to see all the smart school uniforms and shiny new shoes during this start to the new school year! Wearing the correct school uniform is part of a child's preparedness for the school day and we really appreciate your support with this. Please look on the school website if you would like further information about the uniform.

**INSET:** Our first INSET day will be **next Monday 19<sup>th</sup> September**. School will be closed to pupils on this day.

Other INSET days 2016-17: Tuesday 3<sup>rd</sup> January, Friday 31<sup>st</sup> March, Monday 5<sup>th</sup> June

### Parents Evenings

These will be held on:

Tuesday 18<sup>th</sup> October from 4.30 - 7pm

Thursday 20<sup>th</sup> October from 3.30-5pm

Lists will be put up outside as usual for you to sign up to see teachers and our new SENCO Mr Gratwick. Teachers will see parents in the school hall and Mr Gratwick will be in the library.

**Year 3 Parents Reminder:** now your child has moved from Key Stage 1 to Key Stage 2, they will no longer receive free school meals. If you think you may qualify to receive free school meals due to personal circumstances, please ask at the office for a form. Even if your child is not likely to have many meals, it is helpful to the school for you to make a claim anyway, as schools attract additional funding for children entitled to free school meals.



Also fruit is not provided free of charge to Key Stage 2 - please bring in a piece of fruit or vegetable for snack time each day.

### Some Upcoming Events and Dates:

Individual School Photos - Wednesday 21<sup>st</sup> September

These will be taken in the afternoon this year. Parents of children with younger siblings who would like to get a group photo of all their children are welcome to come in from 2.45pm on Wednesday to do this.

Harvest - Thursday 29<sup>th</sup> September at 2p.m. Please send donations of non-perishable food items in to school with the children from Monday 26<sup>th</sup> September.

Holly Class: World War II dressing up day - Tuesday 11<sup>th</sup> October

Life Exhibition Trip - Tuesday 18<sup>th</sup> October.

Trip to Newhaven Fort - Wednesday 19<sup>th</sup> October

VE Day Street Party - Thursday 20<sup>th</sup> October

*\*Mrs Anderson will be sending a letter home next week with more details of Holly Class upcoming events.*

Last day of term - Friday 21<sup>st</sup> October

### Children mentioned in our Golden Book and in Celebration Assemblies:

**Catkins:** 16<sup>th</sup> Sept: Catkins Class - you have all been wonderful learners this week and have worked hard at looking after each other. Well done!

**Willow:** 9<sup>th</sup> Sept: **Fantastic Work** - fantastic writing from Tabitha  
**Great Behaviour** - Emerald for being very mature every morning

**Beech:** 9<sup>th</sup> Sept: **Fantastic Work** - Maisy for taking her time and concentrating hard on activities this week.

**Great Behaviour** - Connor for always following our Golden Rules - all of them!

**Holly:** 9<sup>th</sup> Sept: **Fantastic Work** - Flora for her end of day reflection prayer presentation.

**Great Behaviour** - Thomas M for excellent listening.



### Wakey Shakey Music - Starts Monday 26<sup>th</sup> September 9.00am

A music group for pre-school children and their parents/carers held in the library at Firle School.

Firle Church of England Primary School, Firle, Lewes, East Sussex BN8 6LF Tel/Fax (01273) 858260

[office@firle-school.e-sussex.sch.uk](mailto:office@firle-school.e-sussex.sch.uk)

[www.firleschool.co.uk](http://www.firleschool.co.uk)

Head Teacher: Annie Noble

Free, friendly and welcoming; drop in or come every week.

**Wakey Shakey Music** is an informal music making workshop that lets children explore music and sound through percussion instruments and singing. The material is aimed at the 3-5 age group but younger children are welcome and can join in or observe activities at their own pace. Parents/ carers are encouraged to join in!

The group is led by Flo Sparham who is the music teacher/co-ordinator at Firle Primary School. Flo also works for Brighton and Hove Music Service as a choir leader and teaches music and French from reception to year 6 at Firle and at Primary schools in Brighton and Hove.

Starts Monday 26th September then every Monday during term time. Last session Monday 12th December. (There will be no session on Monday 5th December)

### **Parents' card to Miss Noble**

As Miss Noble isn't back at school yet I thought it might be nice to send her a bunch of flowers and a card to say We Miss You! The card is in the office for people to sign, together with an envelope for you to pop some pennies into if you fancy it. Then next Friday we can send it to her.

Best wishes

Helen (Josephine and Buzzy's Mummy)

\*\*\*\*\*

### **Other News**

#### **Firle Village Car Park and School Drop Off/Pick Up times**

On behalf of Firle Parish Council, Firle Estate and the residents of Firle Bostal and School Bungalows, could I politely remind the Firle School Community to please use the Village Car Park during drop off and pick up times, and refrain from parking along Firle Bostal and School Bungalows and the yellow zigzag lines outside the School.

As communicated in the past, this request is to prevent congestion of agricultural vehicles on Firle Bostal, damage to private vehicles, and to allow access to resident's properties; though most importantly of all to ensure safety for the pupils of the school.

Additionally, could we remind dog walkers remove their dog's mess from the area and not leave in the bins of local residents.

Thank you very much for your understanding and participation in this matter.

Firle Parish Council

**Chiddingly Festival** - please see the attached flyer

#### **2016 Christmas card competition**

Maria Caulfield MP has invited the children to take part in her Christmas card competition.

The theme of the competition this year is "Christmas in Sussex". The winning design will be made into a card for Maria Caulfield MP to send out to hundreds of people, including the Prime Minister.

Entries should be A4, either portrait or landscape and the closing date is **Friday 21<sup>st</sup> October**. Please send the entries to Maria Caulfield MP, Unit 6, The Villandry, West Quay, Fort Road, Newhaven BN9 9GB.

Firle Church of England Primary School, Firle, Lewes, East Sussex BN8 6LF Tel/Fax (01273) 858260

[office@firle-school.e-sussex.sch.uk](mailto:office@firle-school.e-sussex.sch.uk)

[www.firleschool.co.uk](http://www.firleschool.co.uk)

Head Teacher: Annie Noble